



FOR LEASE

Building Address:	12004 Riverwood Drive Burnsville, MN
Leasable Area:	2,819 SF
Main Floor Office:	1,559 SF
Mezzanine Storage:	800 SF
Warehouse:	1,260 SF
Clear Height:	14'
Loading:	1-Dock High Door
Power:	100 amps 3 Phase 208V
Tax & CAM	\$2.69 PSF

MICHAEL VALENTINE

PRESIDENT

P: (952) 890-8252

C: (612) 850-4374

MIKE@CPGPROPERTIES.COM

BOB VALENTINE

ASSOCIATE

P: (952) 707-6767

C: (952) 412-5560

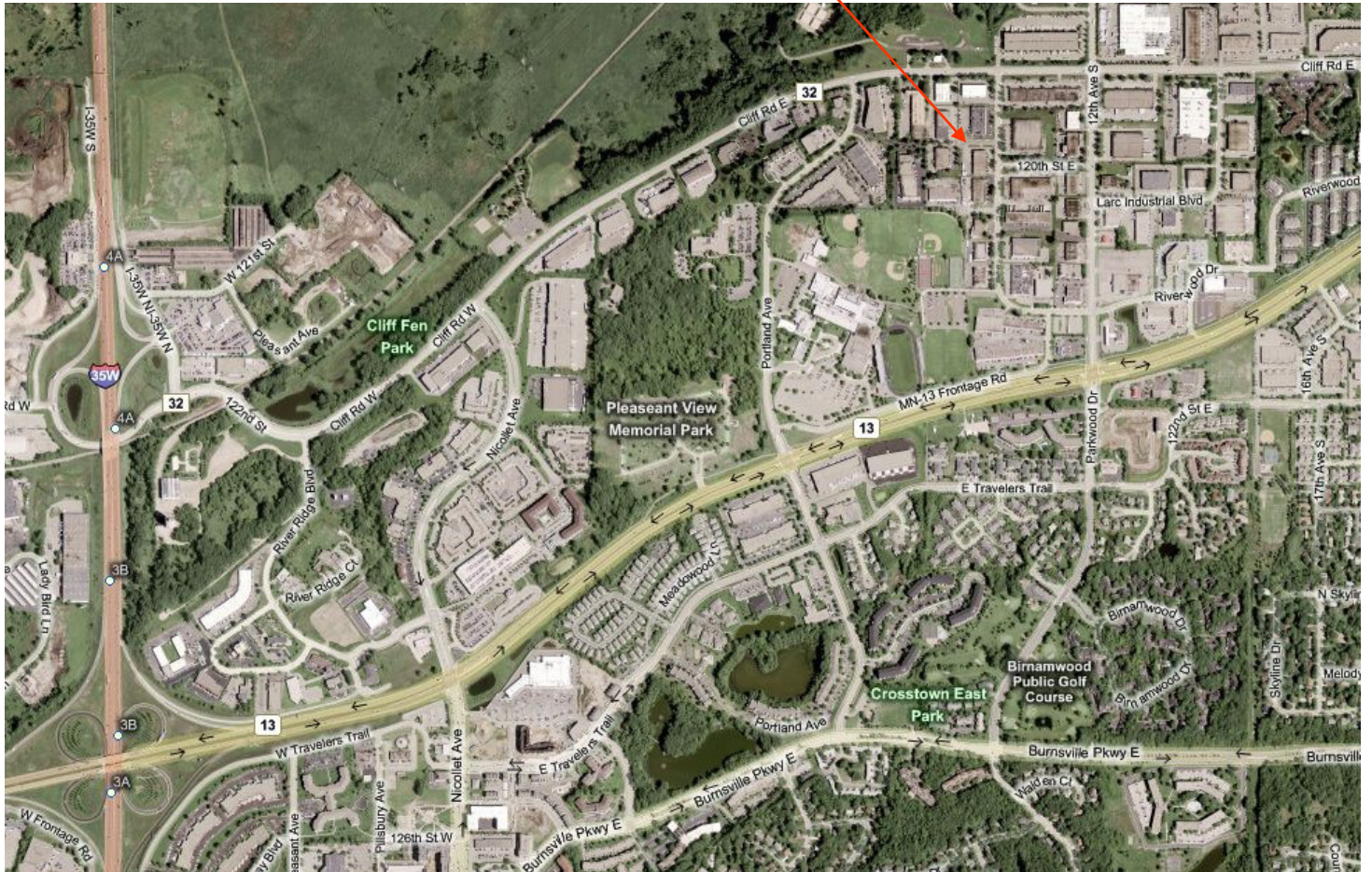
BOB@CPGPROPERTIES.COM

WWW.CPGPROPERTIES.COM





Aerial





Basic Floor Plan (Not As-Built)

