

OFFICE SPACE FOR LEASE



Nicollet Plaza | Burnsville, MN

Nicollet Plaza is located in the “Heart of the City” in Burnsville, and is comprised of upscale mixed-use office/retail space. The main retail building is anchored by Cub Foods and TCF Bank. There are several office suites available ranging from 542 square feet to 5,804 square feet.



COMMERCIAL
PROPERTIES GROUP

Please call for more details!



MICHAEL VALENTINE

PRESIDENT

P: (952) 890-8252

C: (612) 850-4374

MIKE@CPGPROPERTIES.COM

BOB VALENTINE

VICE PRESIDENT

P: (952) 707-6767

C: (952) 412-5560

BOB@CPGPROPERTIES.COM

WWW.CPGPROPERTIES.COM



Nicollet Plaza, Burnsville, MN

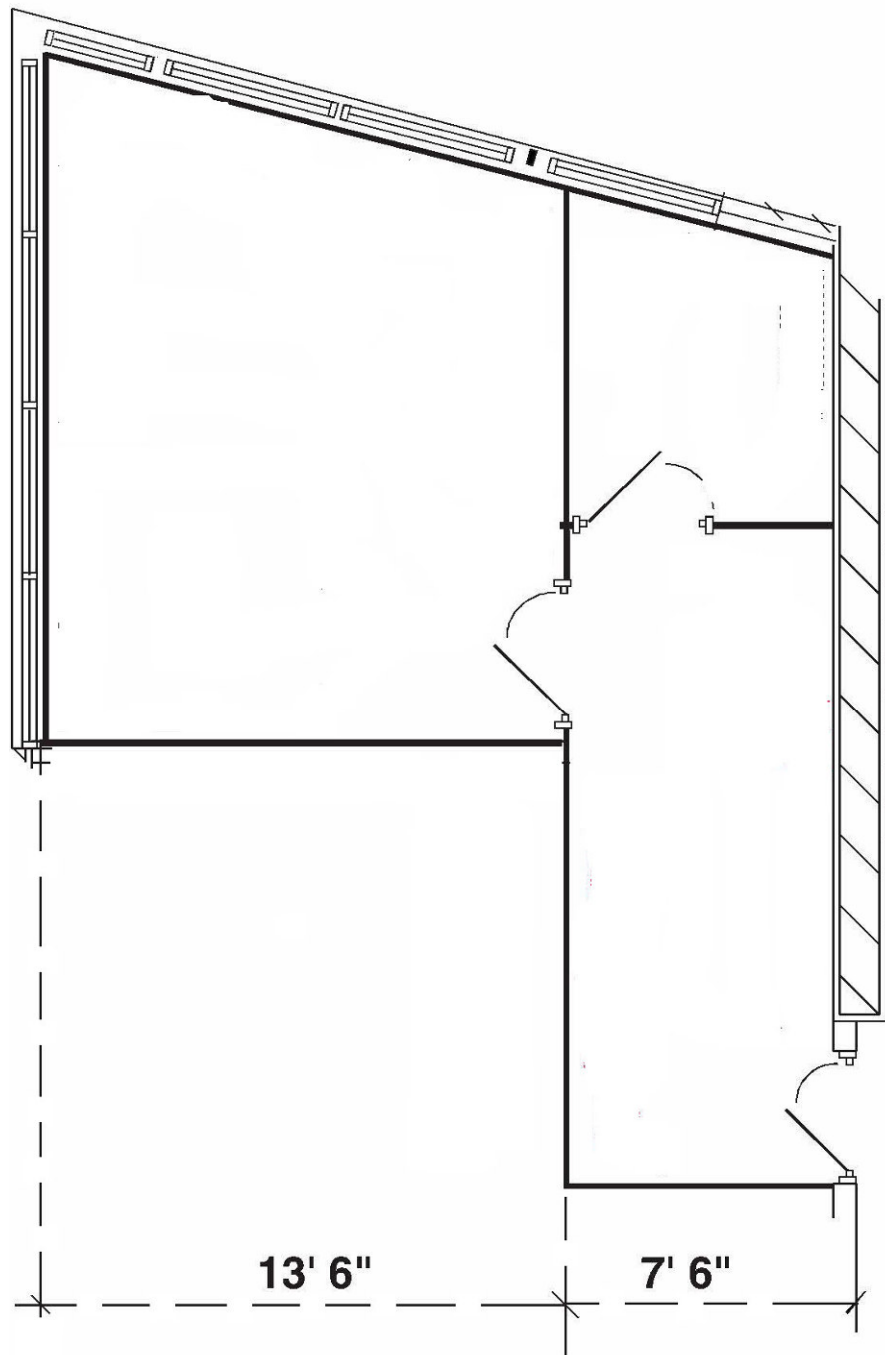
Building Address	200 Travelers Trail E, Burnsville, MN 55337
Description	Office / Professional Building
Building Size	20,825 SF
<u>Office Suites Available</u>	
Suite 205	542 SF
Suite 210	5,804 SF
Suite 235	857 SF
Suite 245	1,647 SF
Suite 235/245 Combined	2,504 SF
Lease Rate	\$10 - \$14 PSF NET
Taxes & Operating Expenses	\$11.47 PSF





Nicollet Plaza

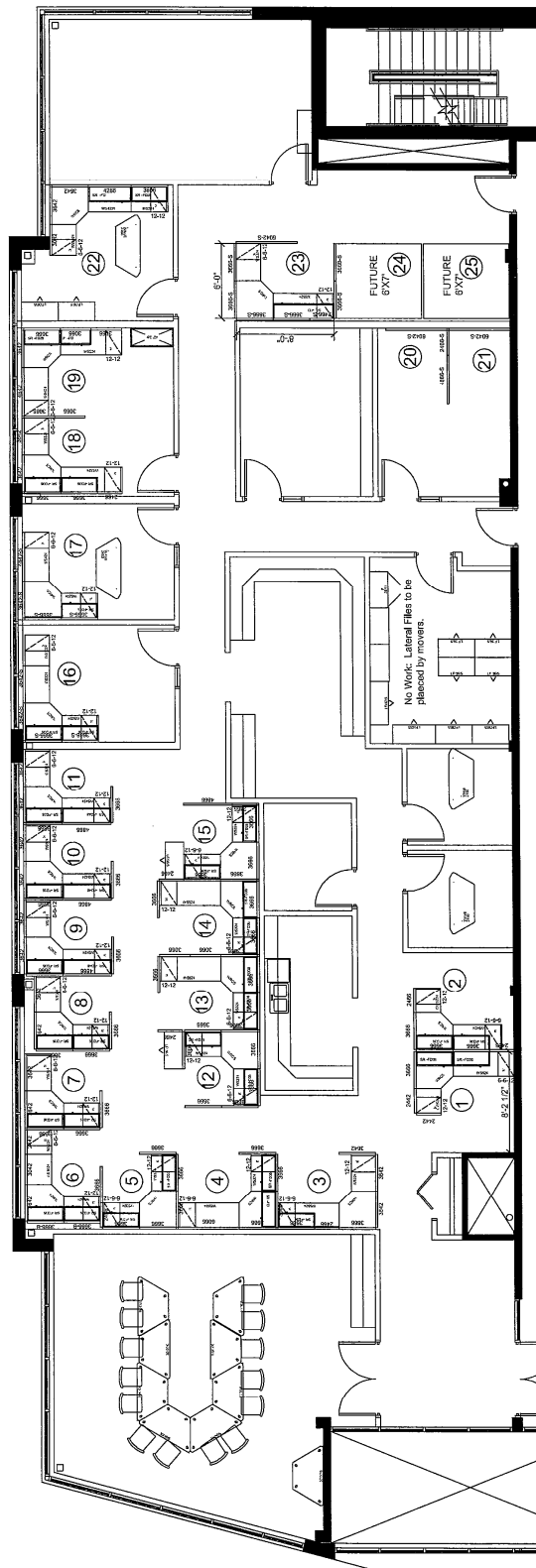
Suite 205 | 542 SF





Nicollet Plaza

Suite 210 | 5,804 SF





Nicollet Plaza

Suite 235 | 857 SF SF

Suite 245 | 1,647 SF

Suites Combined

Suite 235/245 | 2,504 SF

